

WALK FOR WAGEC 2026

Sign-making Guide

MAKE YOUR MESSAGE HEARD



Thank you for walking with us. By carrying a sign, you're helping raise awareness of violence against women and children, and showing your support for a future where everyone can live free from violence.

Whether your message is hopeful, powerful or personal, your sign helps spark conversations and call for change.

[walkforwagec.org.au](https://www.walkforwagec.org.au)

WALK FOR WAGEC
WOMEN'S AND GIRLS' EMERGENCY CENTRE

CREATE A SIGN THAT STANDS OUT

Keep it simple

Use a short message that can be read from a distance.



Make it bold

Choose large lettering and strong colours.



Be creative

Use illustrations, symbols, paint or collage to make your sign unique.



Keep it visible

We recommend A3 size or larger, mounted on sturdy cardboard or corflute.

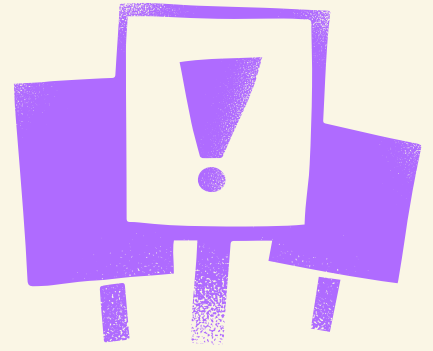


Make it weather friendly

Consider waterproof materials in case of rain.



MESSAGE IDEAS



Call for change

End violence against women

End violence against women and children

Enough is enough

Every step says enough

Walk to end violence

Violence against women must end

Safety and equality

Safety for every woman

Safety shouldn't be a privilege

Every woman deserves to feel safe

Every child deserves safety

Safe homes.
Safe futures.

Women's safety can't wait

Hope and solidarity

Walking for safer futures

Walking together for change

Communities against violence

Stronger together

Change starts with us

We walk for safety and healing

PLEASE KEEP YOUR SIGN

- ✓ Respectful and inclusive
- ✓ Family-friendly
- ✓ Focused on ending violence and supporting women and children
- ✓ Easy to read and understand



SHARE YOUR SIGN

Bring your sign to Walk for WAGEC and share your photos on social media, tagging WAGEC.

Facebook: [@WAGECREDFERN](#)

Instagram: [@womens.girls.emergency.centre](#)

LinkedIn: [Women's & Girls' Emergency Centre \(WAGEC\)](#)

TikTok: [@wagec](#)



WALK FOR WAGEC

WOMEN'S AND GIRLS' EMERGENCY CENTRE